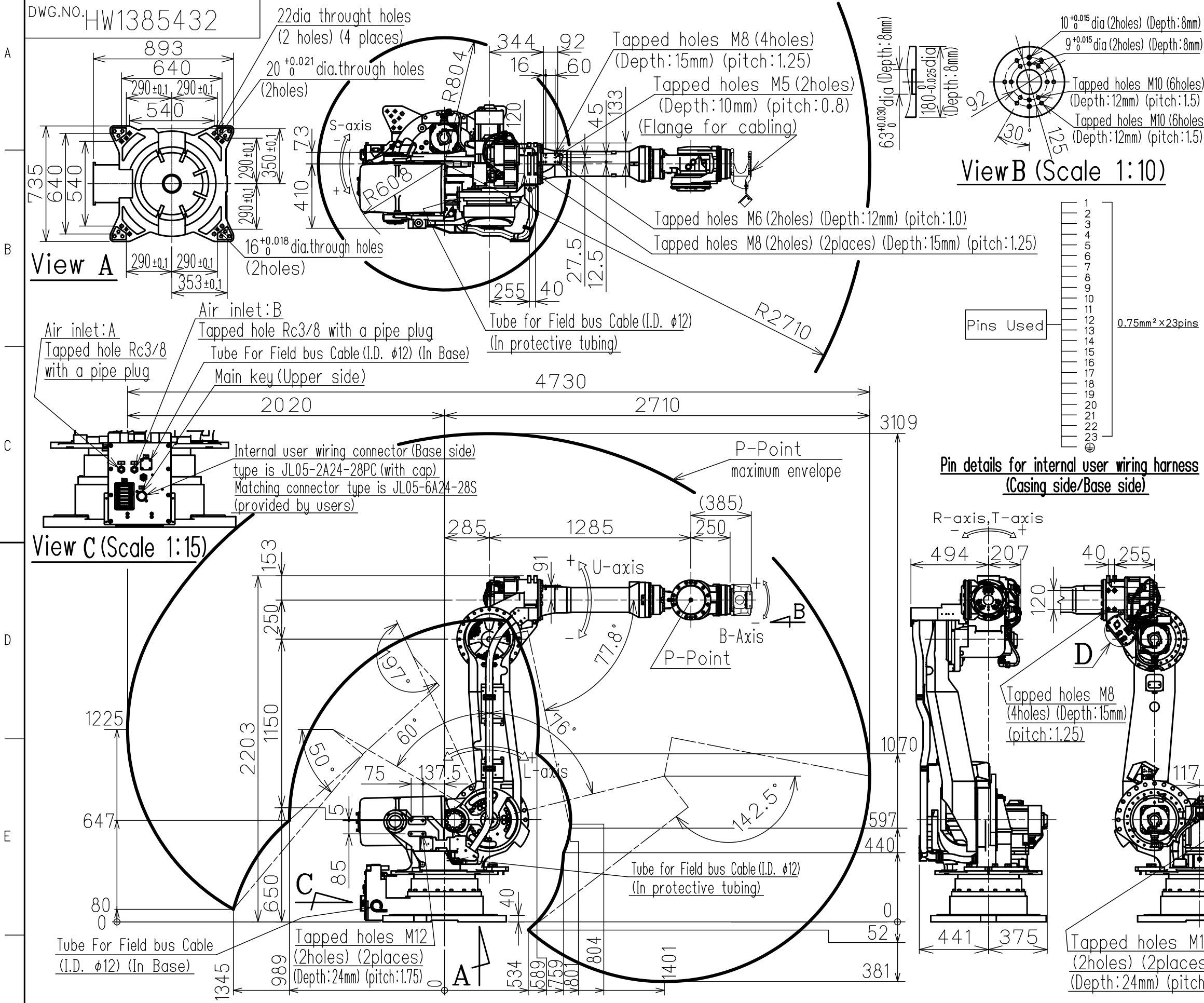
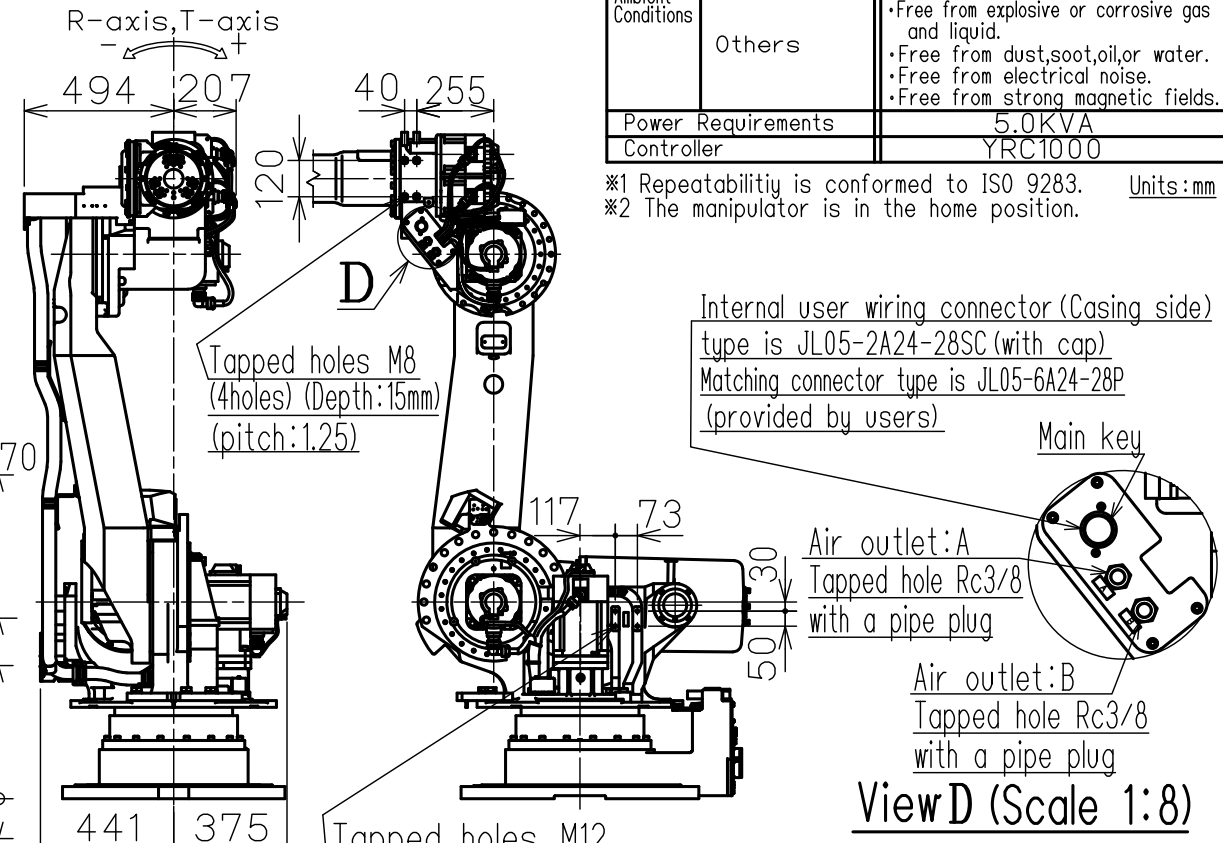


DWG.NO. HW1385432



Item	Model	MOTOMAN-SP235
Flange for Cabling	not-equipped	equipped
Configuration	Vertically articulated	
Degree of Freedom	6	
Payload	Wrist	250 kg
	On U-arm	50 kg
Repeatability (※1)	±0.2 mm	
Range of Motion	S-Axis (Turning)	-180° - +180°
	L-Axis (Lower Arm)	-60° - +76°
	U-Axis (Upper Arm)	-77.8° - +197°
	R-Axis (Roll)	-360° - +360°
	B-Axis (Pitch/Yaw)	-125° - +125°
	T-Axis (Twist)	-360° - +360°
Max Speed	S-Axis	1.75 rad/s, 100°/s
	L-Axis	1.57 rad/s, 90°/s
	U-Axis	1.69 rad/s, 97°/s
	R-Axis	2.09 rad/s, 120°/s
	B-Axis	2.09 rad/s, 120°/s
	T-Axis	3.32 rad/s, 190°/s
Allowable Moment	R-Axis	1385 N·m (141 kgf·m)
	B-Axis	1385 N·m (141 kgf·m)
	T-Axis	735 N·m (75 kgf·m)
Allowable Inertia (GD²/4)	R-Axis	317 kg·m²
	B-Axis	315 kg·m²
	T-Axis	200 kg·m²
Approx. Robot mass	1345kg	
Protected structure	Body: IP54 Wrist: IP67	
Mounting method	Floor-mounted	
Ambient Conditions	Temperature	0 to +45°C
	Humidity	20 to 80%RH (Non-condensing)
	Vibration	4.9m/s² (0.5G) or less
	Altitude	1000m or less
	Others	<ul style="list-style-type: none"> Free from explosive or corrosive gas and liquid. Free from dust, soot, oil, or water. Free from electrical noise. Free from strong magnetic fields.
Power Requirements	5.0KVA	
Controller	YRC1000	

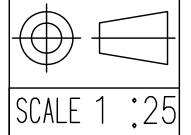
Pin details for internal user wiring harness (Casing side/Base side)



Type	Note
YR-1-06VX250-A00	STANDARD

Note:
 1. All rights reserved.
 2. Please note that the data is subject to be deleted without advance notice.
 3. No warranty is given in relation to the data including the specification.
 4. We are not responsible for any damages or loss caused by the use of the data.

FOR STUDY PURPOSE ONLY



Reference Drawing

TITLE MOTOMAN-SP235
 DIMENSION DIAGRAM

DRWN DATE Oct.03.'17
 DWG.NO. HW1385432

SIZE A3